



European Suppliers  
of Waste-to-Energy  
Technology



**ADVANCED TECHNOLOGIES FOR CLEAN ENERGY  
AND SUSTAINABLE WASTE MANAGEMENT!**

# About ESWET



- **ESWET** is the association representing the **European Suppliers of Waste-to-Energy Technology**.
- Our main task is to **foster the development** and **dissemination** of Waste-to-Energy Technologies.
- We seek to **raise awareness of the positive implications of the technology** both for the environment and the recovery of energy and materials.
- ESWET has **28 members** which are all suppliers of the main components of Waste-to-Energy plants and are active building and maintaining Waste-to-Energy plants in Europe and throughout the world.



# Members



Doosan Lentjes



# Activities



**ESWET** is in charge of **Public Affairs**, specifically dealing with the European Union, on behalf of its members.

## **ESWET:**

- **Influences** the EU decision-making processes
- **Informs** the general public on the benefits of Waste-to-Energy
- **Provides expert advice** on Waste-to-Energy
- **Connects** members, stakeholders and policymakers



# Activities



- ESWET influences the EU decision-making processes through the publication of **position papers, lobbying campaigns** at **EU and national levels**.

**PROMOTE**

## INFORM

- ESWET also **serves as a source of information** for its members and the general public wishing to learn more about Waste-to-Energy and the relevant technologies.

- ESWET provides **expert advice and analysis** of issues related to Waste-to-Energy to all interested parties with the aim **of maintaining a legislative framework that enables Waste-to-Energy to address the EU's residual waste**.

**SUPPORT**

## NETWORK

- ESWET is also a fantastic **source of network** for the suppliers of the **Waste-to-Energy technology**, gathering the **most important companies** active worldwide in the sector.

# Structure



## **ESWET President**

Siegfried Scholz  
*Standardkessel Baumgarte*

## **ESWET Vice-President**

Bruno-Frederic Baudouin  
*Hitachi Zosen Inova*

## **Chairman of Technical Committee**

Hubert de Chefdebien  
*CNIM*

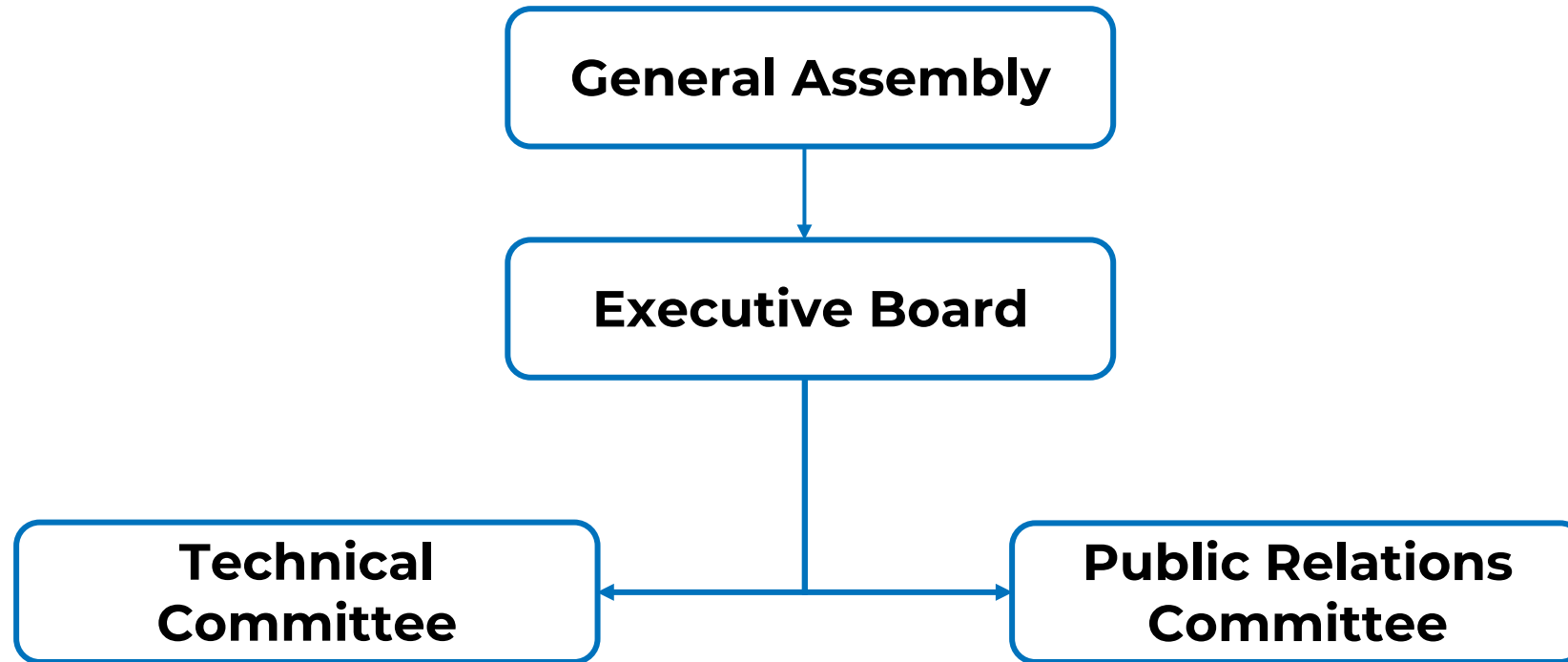
## **Chairman of Public Relations Committee**

Ole Hedegaard Madsen  
*Babcock & Wilcox Vølund*

## **ESWET Secretary General**

Patrick Clerens

# ESWET Bodies





# ESWET Bodies



## General Assembly

- The longstanding **policies** and **the general decision-making process** at ESWET are governed by the General Assembly.
- The General Assembly is in charge of **monitoring the functioning of the association**, including the budget.
- **ESWET President**, Mr Siegfried Scholz (Standardkessel Baumgarte), chairs the General Assembly, where members appoint a person to represent them.
- The General Assembly meets **every six months**, at the premises of a member or in Brussels.





# ESWET Bodies

## General Assembly



# ESWET Bodies



## Executive Board

- The **Executive Board implements the decisions** made at the level of the General Assembly.
- It is composed of the **full members that supply main components** (grates, fluidised beds, rotary kilns, boilers, flue gas cleaning systems).
- **ESWET President**, Mr Siegfried Scholz (Standardkessel Baumgarte), chairs the Executive Board.
- The Executive Board meets **as often as required by the interest of ESWET**, at the premises of a member or in Brussels.



# ESWET Bodies



## Technical Committee

- The Technical Committee oversees the **policy, legal and technical work** of ESWET.
- It **regularly informs** its members on EU developments, **implements the policy positions of ESWET** and **provides input to the work of the EU institutions** whenever required.
- The **Chair of the Technical Committee** is Hubert de Chefdebien (CNIM).
- The Technical Committee meets **every four months**, at the premises of a member or in Brussels.



# ESWET Bodies

## Technical Committee



**Joint Statement  
on the role of  
Waste-to-Energy  
in the EU Taxonomy**




**V2**  
EXPLANATORY & GUIDANCE  
document (E&G-d) on IED-based (draft)  
Waste Incineration BREF  
and BAT conclusions



“In these difficult days, waste management operators and their supply chain have to ensure the safety of their employees and comply with emergency measures, making their mission all the more challenging”.

**Patrick Clerens, ESWET Secretary General**



**Elaboration of  
CONTRACTUAL  
GUIDELINES for  
WASTE-TO-ENERGY**



# ESWET Bodies

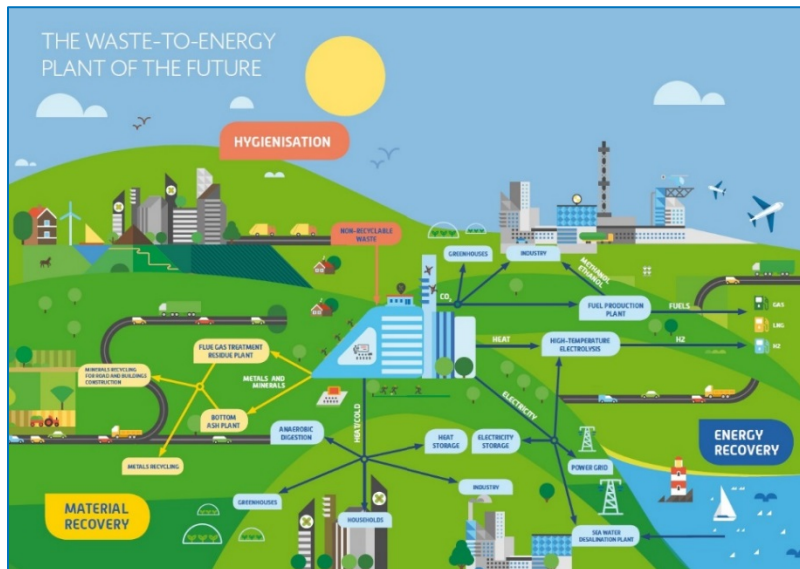
## Public Relations Committee



- The Public Relations Committee defines **the way ESWET communicates**.
- It covers a broad range of tasks, from **organising ESWET-branded events and workshops** to **producing dissemination materials** such as brochures, reports and press releases in order to **ensure the visibility of the association**.
- The **Chair of the Public Relations Committee** is Ole Hedegaard Madsen (Babcock & Wilcox Vølund).
- The Public Relations Committee meets **every four months**, at the premises of a member or in Brussels.



# Public Relations Committee



# ESWET in 2020



ESWET's 2020 priorities were:

- **Promoting** Waste-to-Energy as a sustainable and secure source of energy and materials.
- Launching a [communications campaign](#) on the positive effect of Waste-to-Energy to reduce pollution through the minimisation of landfills.
- **Ensuring** that Waste-to-Energy's **positive contribution** to carbon neutrality is recognised in EU policies and legislation.
- **Ensuring** that Waste-to-Energy is included in EU finance mechanisms such as Taxonomy and Cohesion Funds





# ESWET in 2021



ESWET's 2021 priorities are:

- Having Waste-to-Energy **covered** in the **European Taxonomy**
- **Raising awareness** about Waste-to-Energy in the **circular economy**
- **Achieving** the most favourable outcome for Waste-to-Energy in the revision **EU ETS**, with offset of carbon emissions taken into account.
- **Helping** develop a functioning market for **secondary raw materials**



# Membership

Companies which are established in Europe and are involved in the design, development, production, operation, maintenance, refurbishment or repair and assembly of components designed for Waste-to-Energy technology can become ESWET members.



# Membership

ESWET has 2 membership categories:

## FULL MEMBERSHIP

- Companies supplying main components (*Boilers, Flue Gas Cleaning, Fluidised Beds, Grate Systems, Rotary Kilns*) can only become Full Members
- Member of the General Assembly with voting rights
- Member of the TC and PR Committees
- Member of the Working Groups
- Its representatives are eligible to be President or Vice-President
- The full membership is 16,000€ per year



## Full Members in 2021



# Membership

ESWET has 2 membership categories:

## ASSOCIATE MEMBERSHIP

- Admission as an Associate Member is open to all other companies
- Member of the General Assembly with voting rights
- Member of the Committees
- Member of the Working Groups
- Associate Membership is 5,350€ per year with 3-year commitment



## Associate Members in 2021



# ESWET Secretariat



## Secretary General

Patrick Clerens

[p.clerens@eswet.eu](mailto:p.clerens@eswet.eu)

## Policy Officer

Aurelién Ballagny

[a.ballagny@eswet.eu](mailto:a.ballagny@eswet.eu)

## Policy Officer

Anabelle Schatten

[a.schatten@eswet.eu](mailto:a.schatten@eswet.eu)

## Policy Assistant

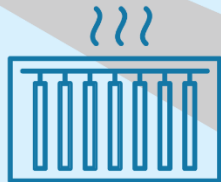
Manon Roussel

[assistant.eswet@eswet.eu](mailto:assistant.eswet@eswet.eu)

## Communications & Events Officer

Paolo Novvion

[p.nouvion@eswet.eu](mailto:p.nouvion@eswet.eu)





## European Suppliers of Waste-to-Energy Technology

Avenue Adolphe Lacomblé 59  
BE -1030 Brussels

**Tel.:** +32 2 743 29 88



[www.eswet.eu](http://www.eswet.eu)



[info@eswet.eu](mailto:info@eswet.eu)



@ESWET\_EU