

Municipal Waste

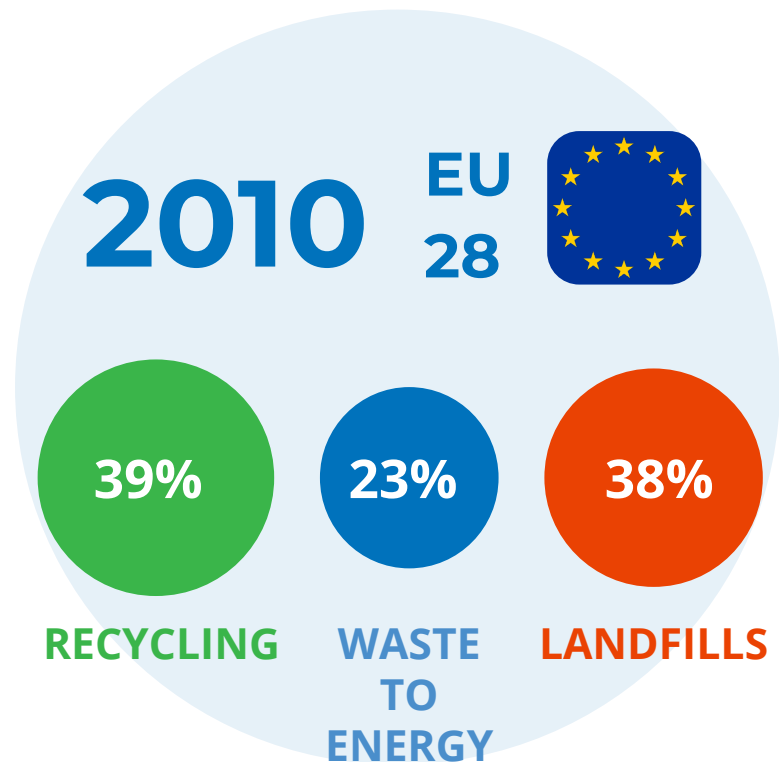
Treatment in the EU

Eurostat data show once again that **recycling** and **Waste-to-Energy** are growing hand-in-hand in the EU.

Countries performing well with **recycling** prefer to send their share of non-recyclable waste to **Waste-to-Energy**.

Unfortunately, too many EU member states still send more than 40% of their municipal waste to **landfills!**

Methane emissions by landfills are 84 times more potent than CO₂ over a 20-year period.



2010

EU
28



39%

RECYCLING

23%

WASTE
TO
ENERGY

38%

LANDFILLS

2019

EU
27



48%

RECYCLING

27%

WASTE
TO
ENERGY

24%

LANDFILLS

The EU citizens generated around 225 million tonnes of municipal waste in 2019.

This corresponds to 502 kg per person, an increase for the **fifth year in a row**, although down from the 2008 peak of 518 kg.

Both **recycling** and **Waste-to-Energy** increased their capacity in the last decade, almost halving the amount of municipal waste sent to **landfills**.

However, much work is still needed to have less than 10% of waste landfilled in the EU by 2035.

Municipal Waste

Treatment in the EU

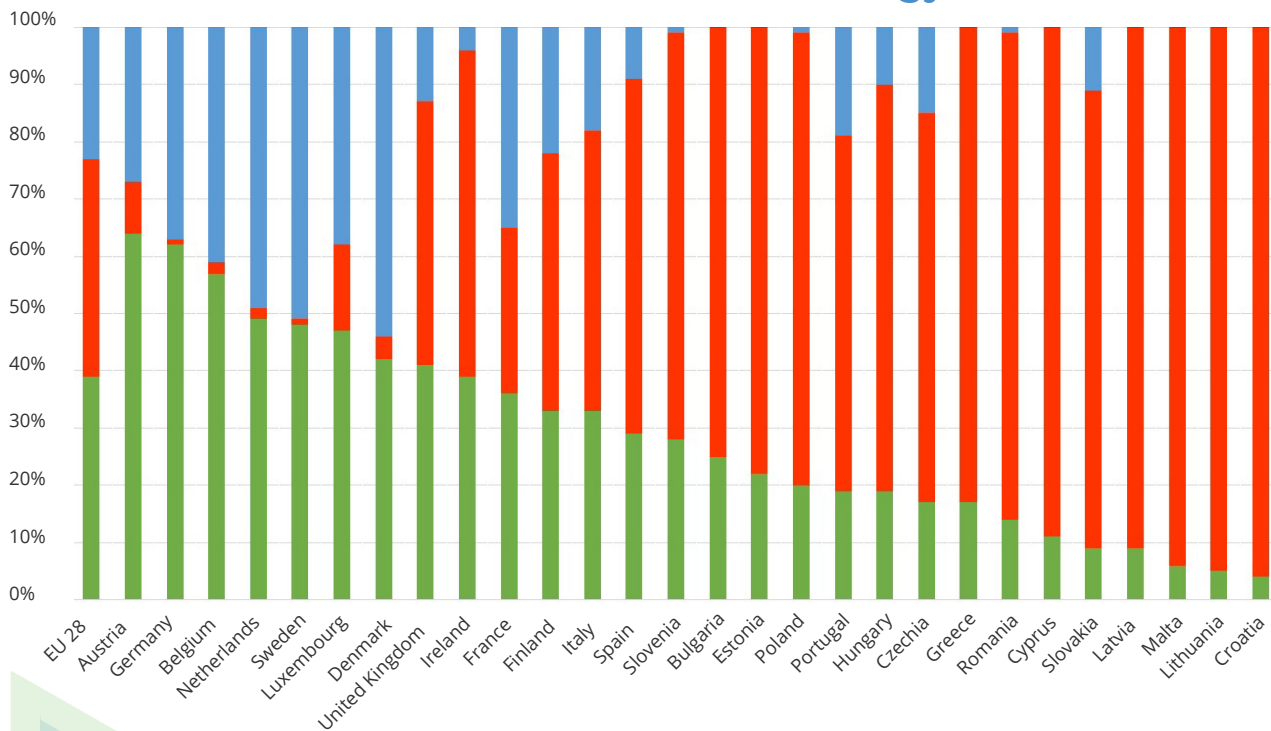
2010

EU-28:

39%
Recycling

23%
Waste-to-Energy

38%
Landfills



2019

EU-27:

48%
Recycling

27%
Waste-to-Energy

24%
Landfills

* 1%
Missing Data

