



**European Suppliers
of Waste-to-Energy
Technology**



**ADVANCED TECHNOLOGIES FOR CLEAN ENERGY
AND SUSTAINABLE WASTE MANAGEMENT!**

About ESWET



- **ESWET** is the association representing the **European Suppliers of Waste-to-Energy Technology**.
- Our main task is to **foster the development** and **dissemination** of Waste-to-Energy Technologies.
- We seek to **raise awareness of the positive implications of the technology** both for the environment and the recovery of energy and materials.
- ESWET has **30 members** which are all suppliers of the main components of Waste-to-Energy plants and are active building and maintaining Waste-to-Energy plants in Europe and throughout the world.



About ESWET



- **ESWET membership** has been constantly growing in the last few years, almost **doubling in numbers** from 2018 to 2021!
- With a bigger membership base, the **manpower of the association** is growing too. In 2022, a third Policy Officer will join the Secretariat, further increasing ESWET's influence at the EU-level.
- Since the publication of the **EU Green Deal**, more and more regulations are impacting the **Waste-to-Energy sector**. ESWET's action is critical to bring the voice of the WtE industry to the EU policy makers.

**18
MEMBERS
in 2018**

**30
MEMBERS
in 2022**



Members



AC BOILERS S.p.A.
formerly Ansaldo Caldale

ANDRITZ

B&W BABCOCK
& WILCOX
RENEWABLE

CARMEUSE

**CLYDE
BERGEMANN**

ENIM

DOOSAN
Doosan Lentjes



**GENERAL
KINEMATICS**

**Hitachi Zosen
INOVA**

Howden

IEM Conveying Systems

Keppel Seghers
Solutions for a Cleaner Future

Lab

Lhoist

LISEGA

loibl
CONVEYING TECHNOLOGIES

LUEHR FILTER
Air Pollution Control Technology

MAGALDI
Dependable Technologies

MARTIN

meldgaard

**MITSUBISHI
POWER**

**NOOTER
ERIKSEN**

SICK
Sensor Intelligence.

JFE Engineering Group
**Standardkessel
Baumgarte**

**STC
POWER**

**Steinmüller
Babcock
Environment**
STEINMÜLLER ENGINEERING GROUP

steinmüller
engineering
The Engineers Company

Sumitomo
SHI FW

Valmet
FORWARD

VINCI
ENVIRONNEMENT

Activities



ESWET is in charge of **Public Affairs**, specifically dealing with the European Union, on behalf of its members.

ESWET:

- **Influences** the EU decision-making process
- **Provides expertise** to the members on the regulations concerning Waste-to-Energy technologies
- **Informs** the general public on the benefits of Waste-to-Energy
- **Connects** members, stakeholders and policymakers

...and much more!



Activities



- ESWET influences the EU decision-making processes through the publication of **position papers, lobbying campaigns** at **EU and national levels**.

PROMOTE

INFORM

- ESWET also **serves as a source of information** for its members and the general public wishing to learn more about Waste-to-Energy and the relevant technologies.

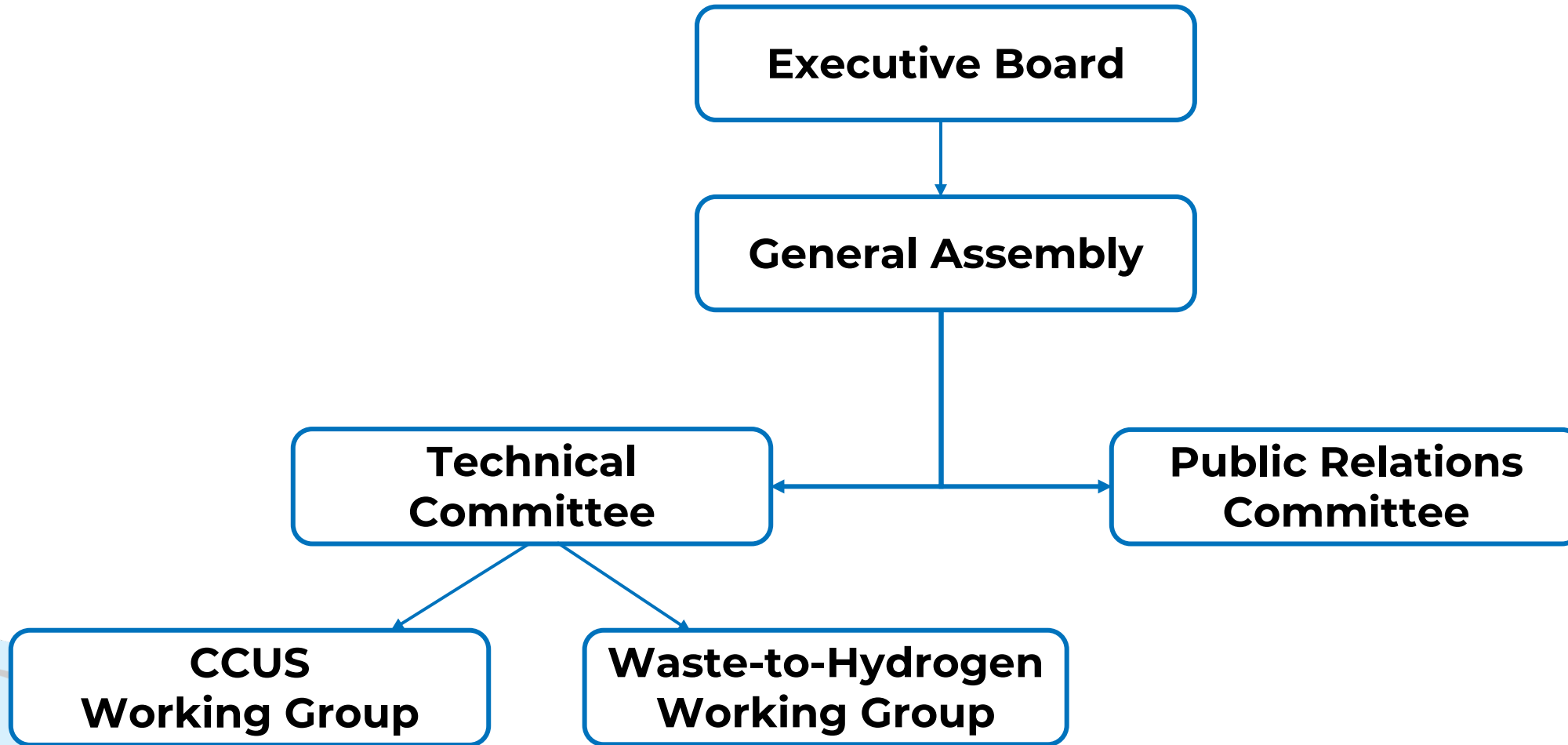
- ESWET provides **expert advice and analysis** of issues related to Waste-to-Energy to all interested parties with the aim **of maintaining a legislative framework that enables Waste-to-Energy to address the EU's residual waste**.

SUPPORT

NETWORK

- ESWET is also a fantastic **source of network** for the suppliers of the **Waste-to-Energy technology**, gathering the **most important companies** active worldwide in the sector.

ESWET Bodies



Structure



ESWET President

Siegfried Scholz
Standardkessel Baumgarte

ESWET Vice-President

Bruno-Frederic Baudouin
Hitachi Zosen Inova

Chairman of Technical Committee

Hubert de Chefdebien
CNIM

Chairman of Public Relations Committee

Ole Hedegaard Madsen
Babcock & Wilcox Vølund

Chairman of CCUS Working Group

Tom Croymans
Keppel Seghers

Chairman of Waste-to-Hydrogen Working Group

Kai Lieball
Hitachi Zosen Inova

ESWET Secretary-General

Patrick Clerens

ESWET Bodies



Executive Board

- The **Executive Board** makes recommendations for the decisions taken by the General Assembly.
- It is composed of the **full members that supply main components** (grates, fluidised beds, rotary kilns, boilers, flue gas cleaning systems).
- **ESWET President**, Mr Siegfried Scholz (Standardkessel Baumgarte), chairs the Executive Board.
- The Executive Board takes place every six months, on the day before the General Assembly. It is held at the premises of a member or in Brussels.



ESWET Bodies



General Assembly

- The **General Assembly leads** the longstanding **policies** and **the general decision-making process** at ESWET.
- The General Assembly is in charge of **monitoring the functioning of the association**, including the budget.
- **ESWET President**, Mr Siegfried Scholz (Standardkessel Baumgarte), chairs the General Assembly, where members appoint a person to represent them.
- The General Assembly meets **every six months**, at the premises of a member or in Brussels.



ESWET Bodies

General Assembly and Executive Board



ESWET Bodies



Technical Committee

- The Technical Committee oversees the **policy, legal and technical work** of ESWET.
- It **regularly informs** its members on EU developments, **implements the policy positions of ESWET** and **provides input to the work of the EU institutions** whenever required.
- The **Chair of the Technical Committee** is Hubert de Chefdebien (CNIM).
- The Technical Committee meets **every four months**, at the premises of a member or in Brussels.



ESWET Bodies

Technical Committee



**Joint Statement
on the role of
Waste-to-Energy
in the EU Taxonomy**



Friday, 19 March 2021
10:00 – 11:30 CET

**WASTE INCINERATION BREF:
ONE YEAR LATER**

A conversation with



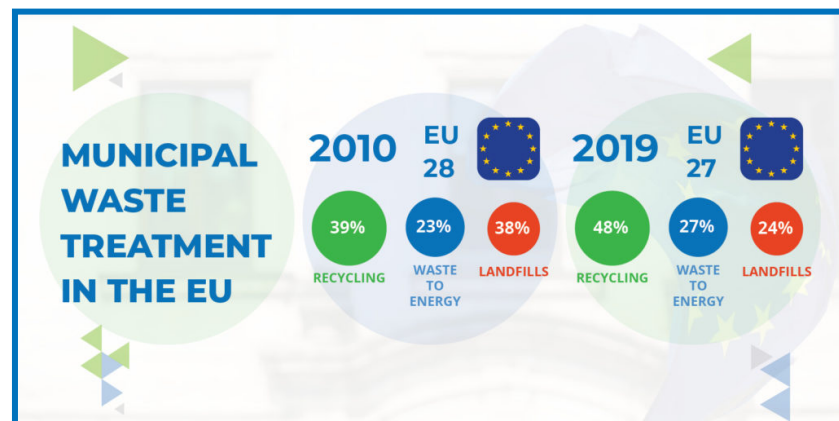
Anita Matic
Policy Officer
EUROPEAN COMMISSION



Bettina Kamuk
Global Market Director WtE
RAMBOLL



Lighea Speziale
External Advisor Environment
CEWEP



**Elaboration of
CONTRACTUAL
GUIDELINES for
WASTE-TO-ENERGY**

CCUS and Waste-to-Hydrogen Working Groups

Carbon Capture, Utilisation and Storage (CCUS)

- The **CCUS ESWET Working Group** aims to assess the leading technical and regulatory challenges and opportunities to enlarge the ground for these applications and make the **Waste-to-Energy** sector a **driver for carbon capture in Europe**.
- The **Chair of the CCUS Working Group** is Tom Croymans (Keppel Seghers).

Waste-to-Hydrogen

- The **Waste-to-Hydrogen Working Group** aims to analyse the legislative coverage of Waste-to-Hydrogen, evaluate the advantages in supply and demand, and monitor the deployment of Waste-to-Hydrogen projects throughout Europe.
- The **Chair of the Waste-to-Hydrogen Working Group** is Kai Lieball (Hitachi Zosen Inova).

ESWET Bodies

Public Relations Committee



- The Public Relations Committee defines **the way ESWET communicates**.
- It covers a broad range of tasks, from **organising ESWET-branded events and workshops** to **producing dissemination materials** such as brochures, reports and press releases in order to **ensure the visibility of the association**.
- The **Chair of the Public Relations Committee** is Ole Hedegaard Madsen (Babcock & Wilcox Vølund).
- The Public Relations Committee meets **every four months**, at the premises of a member or in Brussels.



ESWET Bodies



Public Relations Committee – The Beauty in the Beast campaign

“**The Beauty in the Beast**” campaign shows the hidden beauties of Waste-to-Energy technologies and their impact on the EU Green Deal.

Join us on a journey through **five different stories** to see the importance of Waste-to-Energy in creating a **pathway to a more sustainable future!**

www.thebeautyinthebeast.eu



ESWET's priorities in 2021



The main files and regulations addressed by ESWET this year:

- **Raising awareness** about Waste-to-Energy in the **circular economy**
- **Achieving** the most favourable outcome for Waste-to-Energy in the revision **EU ETS**, with offset of carbon emissions taken into account.
- Lobbying to include Waste-to-Energy in the **European Taxonomy**
- **Helping** develop a functioning market for **secondary raw materials**
- Launching a **communications campaign** promoting Waste-to-Energy



Membership

Companies which are established in Europe and are involved in the design, development, production, operation, maintenance, refurbishment or repair and assembly of components designed for Waste-to-Energy technology can become ESWET members.



Membership

ESWET has 2 membership categories:

FULL MEMBERSHIP

- Companies supplying main components (*Boilers, Flue Gas Cleaning, Fluidised Beds, Grate Systems, Rotary Kilns*) can only become Full Members
- Member of the General Assembly with voting rights
- Member of the TC and PR Committees
- Member of the Working Groups
- Its representatives are eligible to be President or Vice-President
- The full membership is 17,000€ per year



Full Members in 2022



Membership

ESWET has 2 membership categories:

ASSOCIATE MEMBERSHIP

- Admission as an Associate Member is open to all other companies
- Member of the General Assembly with voting rights
- Member of the Committees
- Member of the Working Groups
- Associate Membership is 5,700€ per year with 3-year commitment



Associate Members in 2022



ESWET Secretariat



Secretary General

Patrick Clerens

p.clerens@eswet.eu

Head of Policy

Aurelién Ballagny

a.ballagny@eswet.eu

Policy Officer

Charoula Melliou

c.melliou@eswet.eu

Policy Officer

Manon Roussel

m.roussel@eswet.eu

Communications & Events Officer

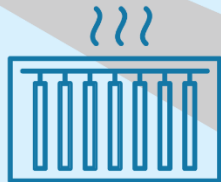
Paolo Nouvion

p.nouvion@eswet.eu

Policy Assistant

Anton Arabadjiev

assistant.eswet@eswet.eu





European Suppliers of Waste-to-Energy Technology

Avenue Adolphe Lacomblé 59
BE -1030 Brussels

Tel.: +32 2 743 29 88



www.eswet.eu



info@eswet.eu



@ESWET_EU