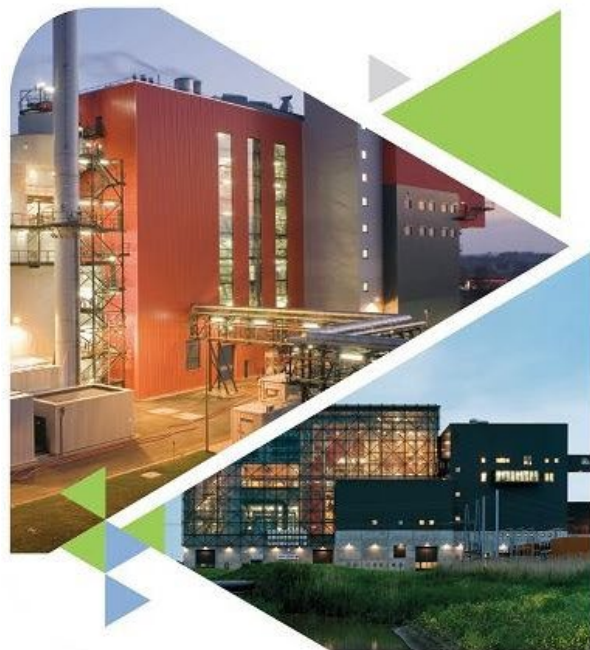




**European Suppliers
of Waste-to-Energy
Technology**



**ADVANCED TECHNOLOGIES FOR CLEAN ENERGY
AND SUSTAINABLE WASTE MANAGEMENT!**

About ESWET



- **ESWET** is the association representing the **European Suppliers of Waste-to-Energy Technology**.
- Our main task is to **foster the development** and **dissemination** of Waste-to-Energy Technologies.
- We seek to **raise awareness of the positive implications of the technology** both for the environment and the recovery of energy and materials.
- ESWET has **38 members** which are all suppliers of the main components of Waste-to-Energy plants and are active building and maintaining Waste-to-Energy plants in Europe and throughout the world.



About ESWET



- **ESWET membership** has been constantly growing in the last few years, more than **doubling in numbers** from 2018 to 2023!
- With a bigger membership base, the **manpower of the association** is growing too. In 2023, technical advisors started supporting the Secretariat, further increasing ESWET's influence at the EU-level.
- Since the publication of the **EU Green Deal**, more and more regulations are impacting the **Waste-to-Energy sector**. ESWET's action is critical to bring the voice of the WtE industry to the EU policy makers.

**18
MEMBERS
in 2018**

**38
MEMBERS
in 2023**



Members



7



Activities



ESWET is in charge of **Public Affairs**, specifically dealing with the European Union, on behalf of its members.

ESWET:

- **Influences** the EU decision-making process
- **Provides expertise** to the members on the regulations concerning Waste-to-Energy technologies
- **Informs** the general public on the benefits of Waste-to-Energy
- **Connects** members, stakeholders and policymakers

...and much more!



ESWET Main Activities



ADVOCACY

ESWET works on the **latest European regulations** involving Waste-to-Energy and exchanges daily with the EU policymakers to **defend the interests** of the **Waste-to-Energy** suppliers.

RAISING AWARENESS

ESWET **organises events and publications** to promote Waste-to-Energy at the EU level. The association also constantly provides its members with the **latest news** on the WtE sector.

NETWORK

ESWET organises activities and meetings to offer a **room for networking** to all its members. With 38 members from all over Europe, ESWET gathers the **main players of the WtE sector**.

ESWET priorities in 2023

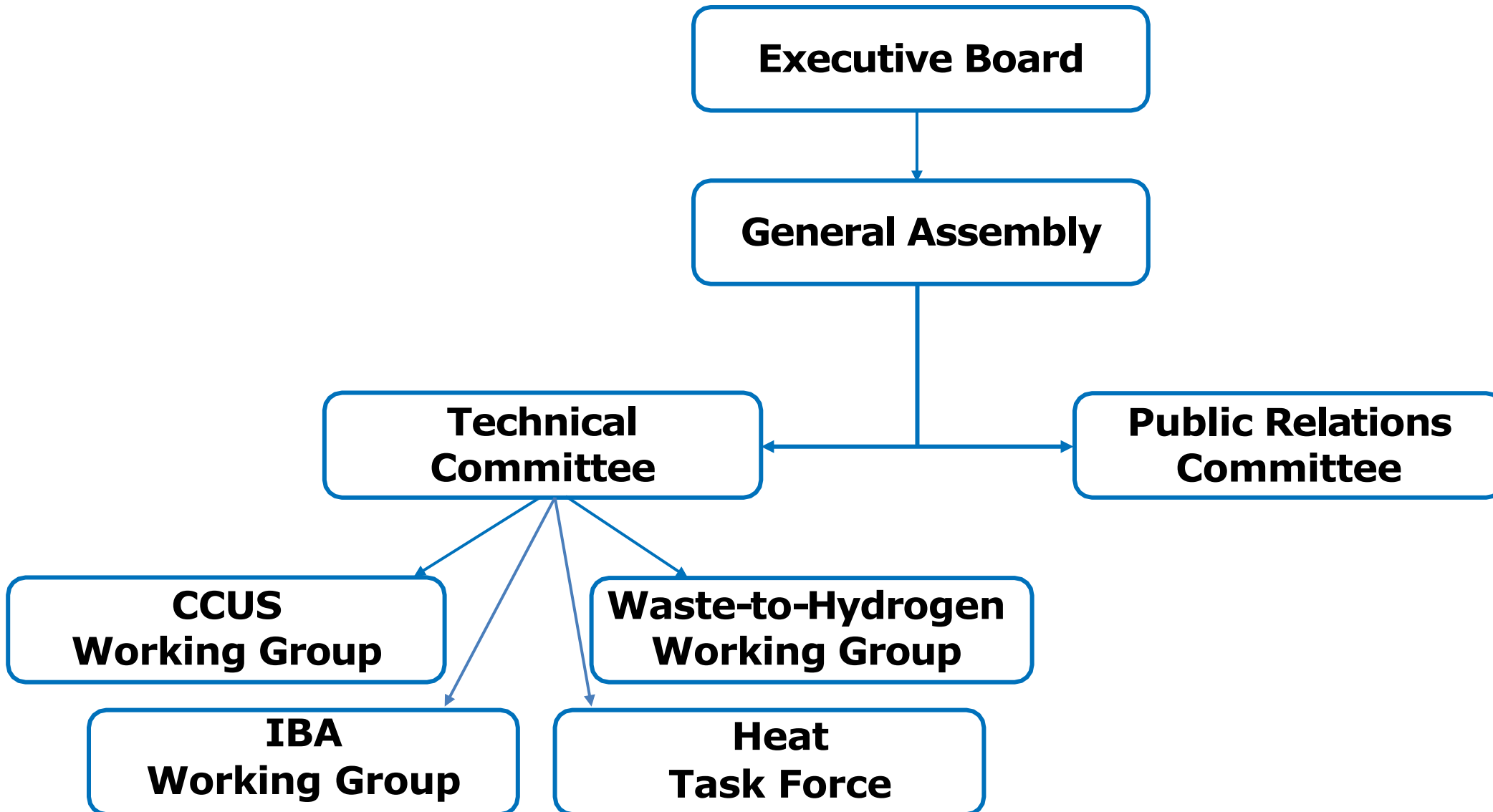


The main files and regulations addressed by ESWET this year:

- **Raising awareness** about Waste-to-Energy in the **circular economy**
- **Achieving** the most favorable outcome for Waste-to-Energy in the revision of the **EU ETS**, the European carbon market.
- Preserving our interest in the ongoing revision of the **Industrial Emissions Directive**, an essential file for the WtE sector.
- **Helping** develop a functioning market for **secondary raw materials**
- Updating our **contractual guidelines** for successful Waste-to-Energy projects



ESWET Structure



ESWET Structure



ESWET Vice-President

Ulrich Martin
MARTIN GmbH

ESWET President

Siegfried Scholz
Hitachi Zosen Inova

ESWET Vice-President

Ivan Christiaens
Keppel Seghers

Chair of Technical Committee

Désiré BenDahan
PAPREC ENGINEERING CNIM

Chair of Public Relations Committee

Ole Hedegaard Madsen
Babcock & Wilcox Vølund

Chair of CCUS WG

Tom Croymans
Keppel Seghers

Chair of WtH WG

Kai Lieball
Hitachi Zosen Inova

Chair of IBA WG

Johan Heiszwolf
Lhoist

Chair of Heat Task Force

Jens Kitzhofer
APEX Group

ESWET Secretary-General

Patrick Clerens

ESWET Bodies

Executive Board and General Assembly



Executive Board

- The **Executive Board** discusses and decides the main priorities for the association and makes recommendations for the decisions taken by the General Assembly.
- It is composed of the **full members that supply main components** (grates, fluidised beds, rotary kilns, boilers, flue gas cleaning systems, incl. carbon capture).
- **ESWET President**, Mr Siegfried Scholz (Hitachi Zosen Inova), chairs the Executive Board.
- The Executive Board takes place every six months, on the day before the General Assembly. It is held at the premises of a member or in Brussels.



General Assembly

- The **General Assembly leads** the longstanding **policies** and **the general decision-making process** at ESWET.
- The General Assembly is in charge of **monitoring the functioning of the association**, including the budget.
- **ESWET President**, Mr Siegfried Scholz (Hitachi Zosen Inova), chairs the General Assembly, where members appoint a person to represent them.
- The General Assembly meets **every six months**, at the premises of a member or in Brussels.



ESWET Bodies

Technical Committee



**Joint Statement
on the role of
Waste-to-Energy
in the EU Taxonomy**



Friday, 19 March 2021
10:00 – 11:30 CET

**WASTE INCINERATION BREF:
ONE YEAR LATER**

A conversation with



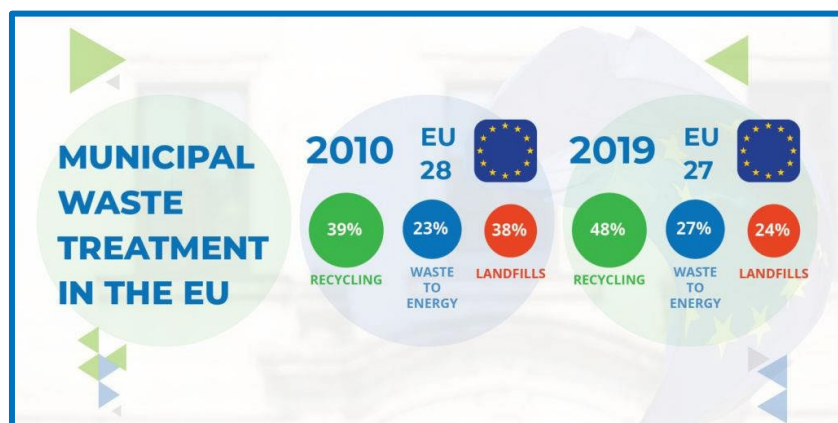
Anita Matic
Policy Officer
EUROPEAN COMMISSION




Bettina Kamuk
Global Market Director WtE
RAMBOLL



Lighea Speziale
External Advisor Environment
CEWEP



**Elaboration of
CONTRACTUAL
GUIDELINES for
WASTE-TO-ENERGY**



Technical Committee

- The Technical Committee oversees the **policy, legal, and technical work** of ESWET.
- It **regularly informs** its members on EU developments, **implements the policy positions of ESWET** and **provides input to the work of the EU institutions** whenever required.
- The **Chair of the Technical Committee** is Désiré BenDahan (Paprec Cnim).
- The Technical Committee meets **every four months**, at the premises of a member or in Brussels.



Carbon Capture, Utilisation and Storage (CCUS) Working Group

- The **CCUS ESWET WG** aims to assess the leading technical and regulatory challenges and opportunities to enlarge the ground for these applications and make the **Waste-to-Energy** sector a **driver for carbon capture in Europe**. The **Chair of the CCUS Working Group** is Tom Croymans (Keppel Seghers).

Waste-to-Hydrogen Working Group

- The **Waste-to-Hydrogen WG** aims to analyse the legislative coverage of Waste-to-Hydrogen, evaluate the advantages in supply and demand, and monitor the deployment of Waste-to-Hydrogen projects throughout Europe. The **Chair of the Waste-to-Hydrogen Working Group** is Kai Lieball (Hitachi Zosen Inova).

Incineration Bottom Ash (IBA) Working Group

- The **IBA WG** aims to analyse and respond to the legislative risks that could be detrimental to the IBA sector, and shed a positive light on its utilisation. – **The Chair of the IBA Working Group** is Johan Heiszwolf (Lhoist).

Heat Task Force – *newly established*

- **Chair of the Task Force** – Jens Kitzhofer (APEX Group).

ESWET Bodies

Public Relations Committee



ESWET
European Committee of the Regions

Waste-to-Energy & the City

Conference

Generating value for Communities

REGISTRATION OPEN

16 May 2023, 14:00 - 17:30 CEST

Brussels, Committee of the Regions (hybrid)

ESWET

New Perspectives For Waste-to-Energy

Fact sheet
Waste-to-Energy

Highlighting the key benefits of Waste-to-Energy (WtE) as a circular, low-carbon and low-polluting waste management option.

Waste-to-Energy for a clean circular economy

Waste-to-Energy treats residual waste, waste that cannot be recycled, ensuring a clean recycling stream and recovering energy for homes, offices and industry. Together with waste prevention, reuse and recycling, Waste-to-Energy contributes towards the achievement of zero landfills in Europe.

As recognised in the **Reflection Paper towards a Sustainable Europe by 2030** published in 2020, Waste-to-Energy is part of the Circular Economy Action Plan set up by the European Commission.

Recycling and Waste-to-Energy lead EU municipal waste treatment

Municipal waste in Europe is increasingly diverted from landfill (yellow column) to recycling (green column) and Waste-to-Energy (blue column).

Nevertheless, differences remain between member states. Some of them will rely heavily on landfills.

Figures confirm that countries with high recycling and Waste-to-Energy rates are those that meet the requirements of the waste legislation.

Municipal waste treatment in the EU (2022 EUROSTAT data)

Waste Treatment	Percentage
Recycled	48%
Waste-to-Energy	38%
Landfilled	14%

Waste-to-Energy: THE BEAUTY OR THE BEAST?

MONDAY, 25 OCTOBER 2021 / 14:00 – 17:00 CET

MEDIA PARTNER: EURACTIV ONLINE EVENT BROADCASTED LIVE FROM EURACTIV OFFICES

Friday, 27 November 2020
10:00 – 11:30 CET

ESWET

CAN WASTE-TO-ENERGY BECOME CARBON NEGATIVE?

REGISTER NOW!

A conversation with:

Jannicke Bjerkas
Director CCS
Fortum Oslo Varme

David Kearns
Senior Consultant,
Global CCS Institute

Maria Velkova
Policy Officer,
European Commission

Public Relations Committee

- The Public Relations Committee defines **the way ESWET communicates**.
- It covers a broad range of tasks, from **organising ESWET-branded events and workshops** to **producing dissemination materials** such as brochures, reports, and press releases to **ensure the visibility of the association**.
- The **Chair of the Public Relations Committee** is Ole Hedegaard Madsen (Babcock & Wilcox Vølund).
- The Public Relations Committee meets **every four months**, at the premises of a member or in Brussels.



ESWET Bodies



Public Relations Committee – Ongoing campaigns

'The IRF' showcases a new model of Waste-to-Energy plant unlocking the full decarbonisation potential of WtE.

'New Perspectives' to highlight the positive practical societal benefits of Waste-to-Energy by publishing different articles.

'Activity Report' (of the current year), this document is available online and in print. It depicts the internal structure, goals and interests of the association. Also, its members and communications activities.



Membership

Companies which are established in Europe and are involved in the design, development, production, operation, maintenance, refurbishment or repair and assembly of components designed for Waste-to-Energy technology can become ESWET members.



Membership

ESWET has 2 membership categories:

FULL MEMBERSHIP

- Companies supplying main components [*Boilers, Flue Gas Cleaning (incl. Carbon Capture), Fluidised Beds, Grate Systems, Rotary Kilns*] can only become Full Members
- Member of the General Assembly with voting rights
- Member of the TC and PR Committees
- Member of the Working Groups
- Representatives are eligible to be President or Vice-President of ESWET
- The full membership is 20,592€ per year



Full Members in 2023



Membership

ESWET has 2 membership categories:

ASSOCIATE MEMBERSHIP

- Admission as an Associate Member is open to all other companies
- Member of the General Assembly with voting rights
- Member of the Committees
- Member of the Working Groups
- Associate Membership is 8,840€ per year with 2-year commitment



Associate Members in 2023



ESWET Secretariat



Secretary General

Patrick Clerens

p.clerens@eswet.eu

Head of Policy

Charoula Melliou

c.melliou@eswet.eu

Policy Officer,

Antonella Del Figliolo

a.delfigliolo@eswet.eu

Communications & Events Officer

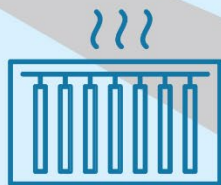
Valentina Ferrara

v.ferrara@eswet.eu

Policy Assistant

Robert Doyle

assistant.eswet@eswet.eu





European Suppliers of Waste-to-Energy Technology

Avenue Adolphe Lacomblé 59
BE -1030 Brussels

Tel.: +32 2 743 29 88



www.eswet.eu



info@eswet.eu



@ESWET_EU