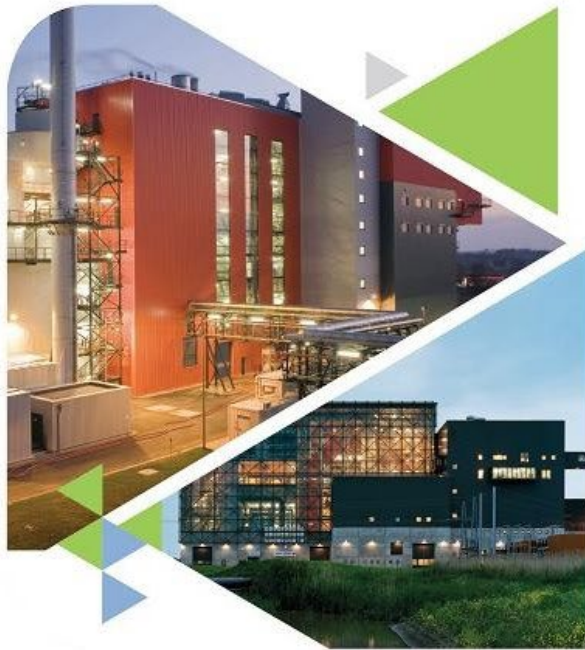




European Suppliers of Waste-to-Energy Technology



**ADVANCED TECHNOLOGIES FOR CLEAN ENERGY
AND SUSTAINABLE WASTE MANAGEMENT!**

About ESWET



- **ESWET** is the association representing the **European Suppliers of Waste-to-Energy Technology**.
- Our main task is to **foster the development** and **dissemination** of Waste-to-Energy Technologies.
- We seek to **raise awareness of the positive implications of the technology** both for the environment and the recovery of energy and materials.
- ESWET has **41 members** which are all suppliers of the main components of Waste-to-Energy plants and are active building and maintaining Waste-to-Energy plants in Europe and throughout the world.



About ESWET



- **ESWET's membership** has experienced significant growth in recent years, **more than doubling** between 2018 and 2025.
- This expanding membership base has bolstered the association's **resources and personnel**, allowing for **greater influence and reach**, and enhancing ESWET's impact at the EU level.
- With the introduction of the **EU Green Deal**, the Waste-to-Energy (WtE) sector faces an increasing number of regulations. ESWET's role has become more crucial than ever, ensuring that the voice of the WtE industry is effectively represented in EU policymaking.

**18
MEMBERS
in 2018**

**41
MEMBERS
in 2025**



ESWET members



Activities



ESWET is in charge of **Public Affairs**, specifically dealing with the European Union, on behalf of its members.

ESWET:

- **Influences** the EU decision-making process
- **Provides expertise** to the members on the regulations concerning Waste-to-Energy technologies
- **Informs** the general public on the benefits of Waste-to-Energy
- **Connects** members, stakeholders and policymakers

...and much more!



ESWET Main Activities



ADVOCACY

ESWET works on the **latest European regulations** involving Waste-to-Energy and exchanges daily with the EU policymakers to **defend the interests** of the **Waste-to-Energy** suppliers.

RAISING AWARENESS

ESWET **organises events and publications** to promote Waste-to-Energy at the EU level. The association also constantly provides its members with the **latest news** on the WtE sector.

NETWORK

ESWET organises activities and meetings to offer a **room for networking** to all its members. With 41 members from all over Europe, ESWET gathers the **main players of the WtE sector**.

ESWET priorities in 2024

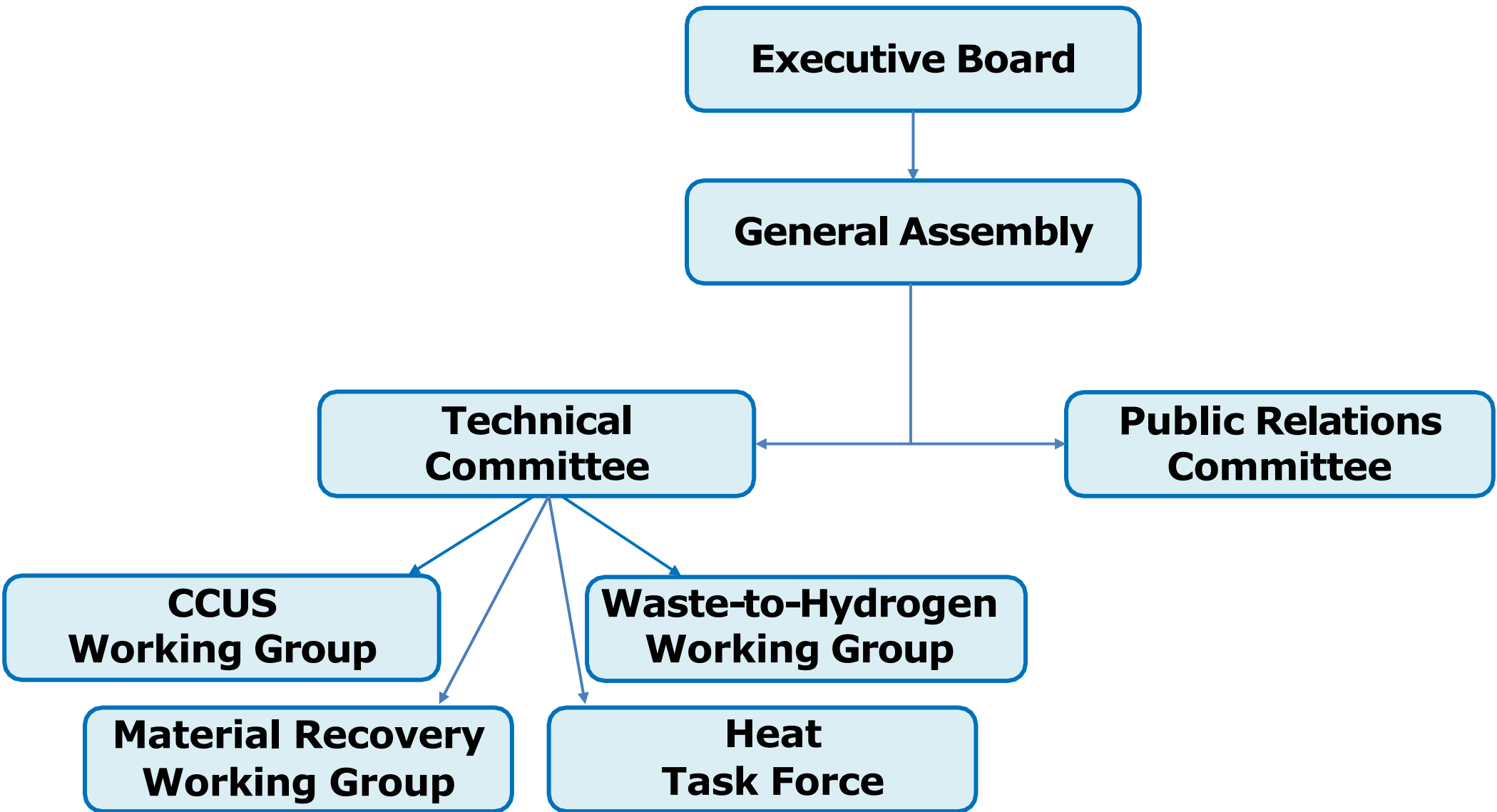


The main files and regulations addressed by ESWET in 2024:

- Raising awareness about Waste-to-Energy in the **circular economy**.
- **Achieving** the most favorable outcome for Waste-to-Energy in the European and UK markets on carbon emissions (ETS) and carbon removals.
- Preserving our interests in the revision of the **Industrial Emissions Directive and the Waste Framework Directive**, two essential files for the WtE sector.
- Helping develop a functioning market for **secondary raw materials** based on recovered materials from WtE processes.
- Actively promoting the concept of the **Integrated Resource-Recovery Facility**, the step-change evolution of the WtE plant.



ESWET Structure



ESWET Structure



ESWET Vice-President

Ulrich Martin
MARTIN GmbH

ESWET President

Siegfried Scholz
Kanadevia Inova

ESWET Vice-President

Ivan Christiaens
Keppel Seghers

Chair of Technical Committee

Désiré BenDahan
PAPREC ENGINEERING CNIM

Chair of Public Relations Committee

Ole Hedegaard Madsen
Babcock & Wilcox Vølund

Chair of CCUS WG

Tom Croymans
Keppel Seghers

Chair of WtH WG

Kai Lieball
Kanadevia Inova

Chair of Mat. Rec. WG

Johan Heiszwolf
Lhoist

Chair of Heat Task Force

Jens Kitzhofer
APEX Group

ESWET Secretary-General

Patrick Clerens

ESWET Bodies

Executive Board and General Assembly



ESWET Bodies



Executive Board

- The **Executive Board** discusses and decides the main priorities for the association and makes recommendations for the decisions taken by the General Assembly.
- It is composed of the **full members that supply main components** (grates, fluidised beds, rotary kilns, boilers, flue gas cleaning systems, incl. carbon capture).
- **ESWET President**, Mr Siegfried Scholz (Kanadevia Inova), chairs the Executive Board.
- The Executive Board takes place every six months, on the day before the General Assembly. It is held at the premises of a member or in Brussels.



ESWET Bodies



General Assembly

- The **General Assembly leads** the longstanding **policies** and **the general decision-making process** at ESWET.
- The General Assembly is in charge of **monitoring the functioning of the association**, including the budget.
- **ESWET President**, Mr Siegfried Scholz (Kanadevia Inova), chairs the General Assembly, where members appoint a person to represent them.
- The General Assembly meets **every six months**, at the premises of a member or in Brussels.



ESWET Bodies

Technical Committee



Joint Statement on the role of Waste-to-Energy in the EU Taxonomy



Friday, 19 March 2021
10:00 – 11:30 CET

WASTE INCINERATION BREF: ONE YEAR LATER

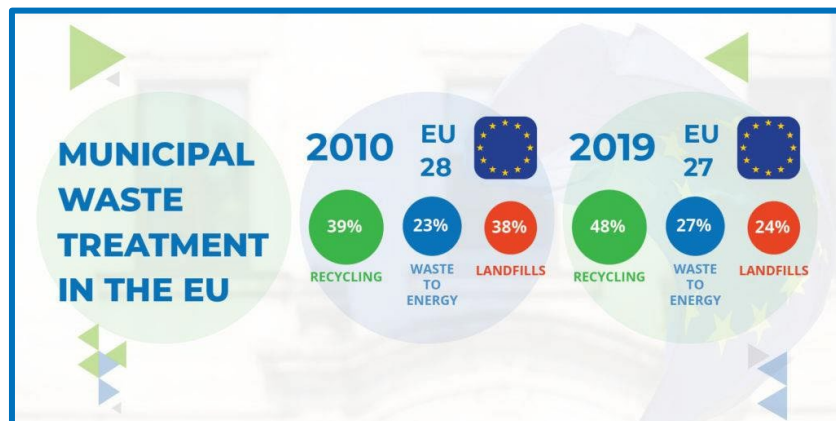
A conversation with



Anita Matic
Policy Officer
EUROPEAN COMMISSION

Bettina Kamuk
Global Market Director WtE
RAMBOLL

Lighea Speziale
External Advisor Environment
CEWEP



Elaboration of CONTRACTUAL GUIDELINES for WASTE-TO-ENERGY

Technical Committee

- The Technical Committee oversees the **policy, legal, and technical work** of ESWET.
- It **regularly informs** its members on EU developments, **implements the policy positions of ESWET** and **provides input to the work of the EU institutions** whenever required.
- The **Chair of the Technical Committee** is Désiré BenDahan (Paprec Cnim).
- The Technical Committee meets **every four months**, at the premises of a member or in Brussels.



ESWET Bodies



Carbon Capture, Utilisation and Storage (CCUS) Working Group

- The **CCUS ESWET WG** aims to assess the leading technical and regulatory challenges and opportunities to enlarge the ground for these applications and make the **Waste-to-Energy** sector a **driver for carbon capture in Europe**. The **Chair of the CCUS Working Group** is Tom Croymans (Keppel Seghers).

Waste-to-Hydrogen Working Group

- The **Waste-to-Hydrogen WG** aims to analyse the legislative coverage of Waste-to-Hydrogen, evaluate the advantages in supply and demand, and monitor the deployment of Waste-to-Hydrogen projects throughout Europe. The **Chair of the Waste-to-Hydrogen Working Group** is Kai Lieball (Kanadevia Inova).

Material Recovery Working Group

- The **Material Recovery WG** aims to analyse and respond to the legislative challenges affecting Incineration Bottom Ash and Fly Ash recovery from WtE processes and also shed light on their utilisation. The **Chair of the Working Group** is Johan Heiszwolf (Lhoist).

Heat Task Force

- The Task Force on Heat aims to map the feasibility, benefits, and challenges of heat applications for WtE, assessing at the same time the EU legal framework concerning aspects of heat production and recovery. The **Chair of the Task Force** is Jens Kitzhofer (APEX Group).

ESWET Bodies

Public Relations Committee



ESWET
European Committee of the Regions

Conference
Waste-to-Energy & the City

Generating value for Communities

REGISTRATION OPEN

16 May 2023, 14:00 - 17:30 CEST

Brussels, Committee of the Regions (hybrid)

ESWET

New Perspectives For Waste-to-Energy

Fact sheet Waste-to-Energy

Highlighting the key benefits of Waste-to-Energy (WtE) as a circular, low-carbon and low-polluting waste management option.

Waste-to-Energy for a clean circular economy

Waste-to-Energy treats residual waste, waste that cannot be recycled, ensuring a clean recycling stream and recovering energy for homes, offices and industry.

Together with waste prevention, reuse and recycling, Waste-to-Energy contributes towards the achievement of zero landfill in Europe.

As recognised in the **Reflection Paper towards a Sustainable Europe by 2030** published in 2020, Waste-to-Energy is part of the Circular Economy Action Plan set up by the European Commission.

Recycling and Waste-to-Energy lead EU municipal waste treatment

Municipal waste in Europe is increasingly diverted from landfill (yellow column) to recycling (green column) and Waste-to-Energy technology (blue column).

Nevertheless, differences remain between member states. Some of them still rely heavily on landfills.

Figures confirm that countries with high recycling and Waste-to-Energy rates are those that meet the requirements of the waste legislation.

Waste Treatment	Percentage
Recycled	42%
Waste-to-Energy	38%
Landfilled	20%

Municipal waste treatment in the EU (2022 EUROSTAT) (data)

WASTE-TO-ENERGY: THE BEAUTY OR THE BEAST?

MONDAY, 25 OCTOBER 2021 / 14:00 - 17:00 CET

MEDIA PARTNER: **EURACTIV** ONLINE EVENT BROADCASTED LIVE FROM EURACTIV OFFICES

Friday, 27 November 2020
10:00 - 11:30 CET

CAN WASTE-TO-ENERGY BECOME CARBON NEGATIVE?

REGISTER NOW!

A conversation with:

David Kearns
Senior Consultant,
Global CCS Institute

Jannicke Bjerkas
Director CCS
Fortum Oslo Varme

Maria Velkova
Policy Officer,
European Commission

Public Relations Committee

- The Public Relations Committee defines **the way ESWET communicates**.
- It covers a broad range of tasks, from **organising ESWET-branded events and workshops** to **producing dissemination materials** such as brochures, reports, and press releases to **ensure the visibility of the association**.
- The **Chair of the Public Relations Committee** is Ole Hedegaard Madsen (Babcock & Wilcox Vølund).
- The Public Relations Committee meets **every four months**, at the premises of a member or in Brussels.



ESWET Bodies



Public Relations Committee – Ongoing campaigns

'The IRF' showcases a new model of Waste-to-Energy plant unlocking the full potential of the sector towards decarbonisation and circular economy.



'New Perspectives' to highlight the positive practical societal benefits of Waste-to-Energy by publishing different articles.



'Activity Reports', available online and in print. They depict the internal structure, goals, and interests of the association. Also, its members and communications activities.



Membership

Companies which are established in Europe and are involved in the design, development, production, operation, maintenance, refurbishment or repair and assembly of components designed for Waste-to-Energy technology can become ESWET members.



Membership

ESWET has 2 membership categories:

FULL MEMBERSHIP

- Companies supplying main components [*Boilers, Flue Gas Cleaning (incl. Carbon Capture), Fluidised Beds, Grate Systems, Rotary Kilns*] can only become Full Members
- Member of the General Assembly with voting rights
- Member of the TC and PR Committees
- Member of the Working Groups
- Representatives are eligible to be President or Vice-President of ESWET
- The full membership is 20,592€ per year



Full Members today



Membership

ESWET has 2 membership categories:

ASSOCIATE MEMBERSHIP

- Admission as an Associate Member is open to all other companies
- Member of the General Assembly with voting rights
- Member of the Committees
- Member of the Working Groups
- Associate Membership is 8,840€ per year with a minimum 2-year commitment



Associate Members today



ESWET Secretariat



Secretary General

Patrick Clerens

p.clerens@eswet.eu

Head of Policy

Charoula Melliou

c.melliou@eswet.eu

Communications & Events Officer

Daniela Berretta

d.berretta@eswet.eu

Junior Policy Officer

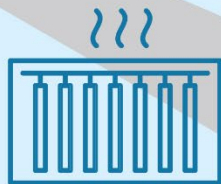
Robert Doyle

r.doyle@eswet.eu

Junior Policy Officer

Paola Macculi

p.macculi@eswet.eu





European Suppliers of Waste-to-Energy Technology

Avenue Adolphe Lacomblé 59
BE -1030 Brussels

Tel.: +32 2 743 29 88



www.eswet.eu



info@eswet.eu



@ESWET_EU