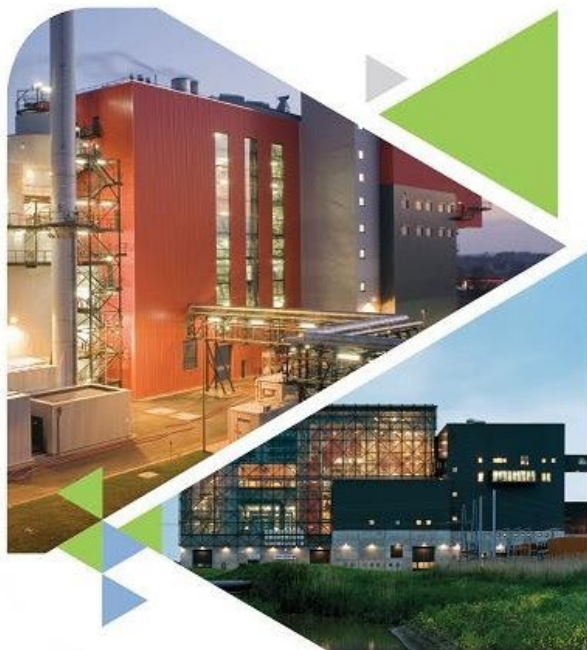




European Suppliers of Waste-to-Energy Technology



**ADVANCED TECHNOLOGIES FOR CLEAN ENERGY
AND SUSTAINABLE WASTE MANAGEMENT!**

About ESWET



- **ESWET** is the association representing the **European Suppliers of Waste-to-Energy Technology**.
- Our main task is to **foster the development** of Waste-to-Energy (WtE) technologies and to **represent the interests** of WtE technology suppliers at EU level.
- We seek to **raise awareness of the positive implications of Waste-to-Energy technology** for the environment and the climate.
- ESWET has **42 members** which are all suppliers of the main components of Waste-to-Energy plants and are actively building and maintaining Waste-to-Energy plants in Europe and throughout the world.



About ESWET



- **ESWET's membership** has experienced significant growth in recent years, **more than doubling** between 2018 and 2025.
- This expanding membership base has bolstered the association's **resources and personnel**, allowing for **greater influence and reach**, and enhancing ESWET's impact at the EU level.
- Since the introduction of the **EU Green Deal** (2019), the Waste-to-Energy (WtE) sector has been facing an increasing number of regulations. ESWET's role has become more crucial than ever, ensuring that the voice of the WtE industry is effectively represented in EU policymaking.

**18
MEMBERS
in 2018**

**42
MEMBERS
in 2025**



ESWET members



Activities



ESWET is in charge of **Public Affairs**, specifically dealing with the European Union, on behalf of its members.

ESWET:

- **Influences** the EU decision-making process
- **Provides expertise** to the members on the regulations concerning Waste-to-Energy technologies
- **Informs** the general public on the benefits of Waste-to-Energy
- **Connects** members, stakeholders and policymakers

...and much more!



ESWET Main Activities



ADVOCACY

ESWET works on the **latest European regulations** involving Waste-to-Energy and exchanges daily with the EU policymakers to **defend the interests** of the **Waste-to-Energy** suppliers.

RAISING AWARENESS

ESWET **organises events and publications** to promote Waste-to-Energy at the EU level. The association also constantly provides its members with the **latest news** on the WtE sector.

NETWORK

ESWET organises activities and meetings to offer a **room for networking** to all its members. With 42 members from all over Europe, ESWET gathers the **main players of the WtE sector**.

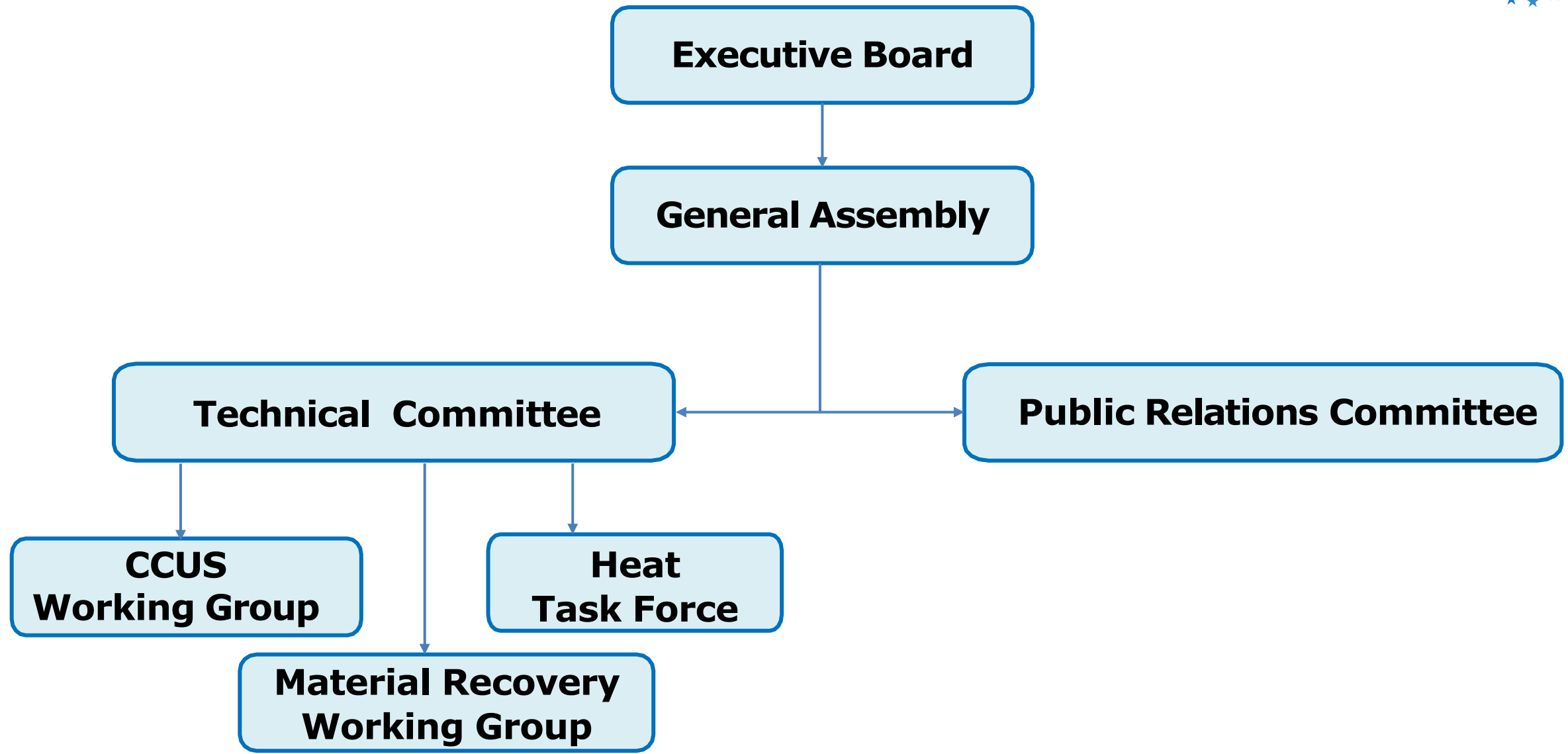
ESWET priorities in 2024 - 2025



- Raising awareness about Waste-to-Energy in the **circular economy**.
- **Achieving** the most favourable outcome for Waste-to-Energy in the European and UK markets on carbon emissions (ETS) and carbon removals.
- Preserving our interests in the revision of the **Industrial Emissions Directive and the Waste Framework Directive**, two essential files for the WtE sector.
- Helping develop a functioning market for **secondary raw materials** based on recovered materials from WtE processes.
- Actively promoting the concept of the **Integrated Resource-Recovery Facility**, the step-change evolution of the WtE plant.



ESWET Structure



ESWET Structure



ESWET Vice-President

Ulrich Martin
MARTIN GmbH

ESWET President

Siegfried Scholz
Kanadevia Inova

ESWET Vice-President

Ivan Christiaens
Keppel Seghers

Chair of Technical Committee

Désiré BenDahan
PAPREC

Chair of Public Relations Committee

Ole Hedegaard Madsen
Babcock & Wilcox Renewables

Chair of CCUS WG

Kai Lieball
Kanadevia Inova

Chair of Material Recovery WG

Johan Heiszwolf
Lhoist

Chair of Heat Task Force

Jens Kitzhofer
APEX Group

ESWET Secretary-General

Patrick Clerens

ESWET Bodies

Executive Board and General Assembly



ESWET Bodies



Executive Board

- The **Executive Board** discusses and decides the main priorities for the association and makes recommendations for the decisions taken by the General Assembly.
- It is composed of the **full members that supply main components** (grates, fluidised beds, rotary kilns, boilers, flue gas cleaning systems, incl. carbon capture).
- **ESWET President**, Mr Siegfried Scholz (Kanadevia Inova), chairs the Executive Board.
- The Executive Board takes place every six months, on the day before the General Assembly. It is held at the premises of a member or in Brussels.



ESWET Bodies



General Assembly

- The **General Assembly leads** the longstanding **policies** and **the general decision-making process** at ESWET.
- The General Assembly is in charge of **monitoring the functioning of the association**, including the budget.
- **ESWET President**, Mr Siegfried Scholz (Kanadevia Inova), chairs the General Assembly, where members appoint a person to represent them.
- The General Assembly meets **every six months**, at the premises of a member or in Brussels.



ESWET Bodies

Technical Committee



Joint Statement on the role of Waste-to-Energy in the EU Taxonomy



Logos of CEWEP, COGEN EUROPE, energy technologies europe, EUROHEAT & POWER, FEAD, and mwe MUNICIPAL WASTE EUROPE.

Friday, 19 March 2021
10:00 – 11:30 CET

WASTE INCINERATION BREF: ONE YEAR LATER

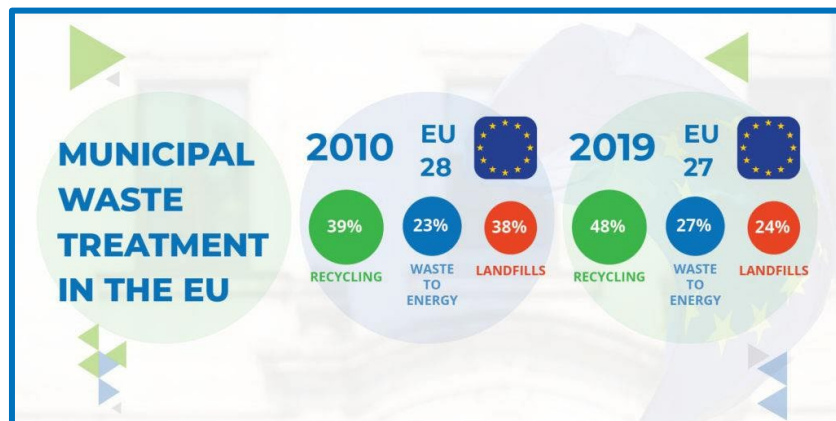
A conversation with



Anita Matic
Policy Officer
EUROPEAN COMMISSION

Bettina Kamuk
Global Market Director WtE
RAMBOLL

Lighea Speziale
External Advisor Environment
CEWEP



Elaboration of CONTRACTUAL GUIDELINES for WASTE-TO-ENERGY

Technical Committee

- The Technical Committee oversees the **policy, legal, and technical work** of ESWET.
- It **regularly informs** its members on EU developments, **implements the policy positions of ESWET** and **provides input to the work of the EU institutions** whenever required.
- The **Chair of the Technical Committee** is Désiré BenDahan (PAPREC).
- The Technical Committee meets **every four months**, at the premises of a member or in Brussels.



Carbon Capture, Utilisation and Storage (CCUS) Working Group

- The **CCUS ESWET WG** aims to assess the leading technical and regulatory challenges and opportunities to enlarge the ground for these applications and make the **Waste-to-Energy** sector a **driver for carbon capture in Europe**. The **Chair of the CCUS Working Group** is Kai Lieball (Kanadevia Inova), and the Co-Chairs are Alain Bill (Andritz) and Vincent Grosjean (Paprec).

Material Recovery Working Group

- The **Material Recovery WG** aims to analyse and respond to the legislative challenges affecting Incineration Bottom Ash and Fly Ash recovery from WtE processes and also shed light on their utilisation. The **Chair of the Working Group** is Johan Heiszwolf (Lhoist).

Heat Task Force

- The Task Force on Heat aims to map the feasibility, benefits, and challenges of heat applications for WtE, assessing at the same time the EU legal framework concerning aspects of heat production and recovery. The **Chair of the Task Force** is Jens Kitzhofer (APEX Group).

ESWET Bodies

Public Relations Committee



10 April 2024, 14:30 – 15:30 CEST
Bergamo

REVOLUTIONISING WASTE MANAGEMENT Unleashing the Potential of Integrated Resource-Recovery Facilities



**WASTE-TO-ENERGY:
THE BEAUTY OR THE BEAST?**

MONDAY, 25 OCTOBER 2021 / 14:00 – 17:00 CET

MEDIA PARTNER: **EURACTIV** ONLINE EVENT BROADCASTED LIVE FROM EURACTIV OFFICES

ESWET
European Committee of the Regions

Conference
Waste-to-Energy & the City
Generating value for Communities

REGISTRATION OPEN

16 May 2023, 14:00 - 17:30 CEST

Brussels, Committee of the Regions (hybrid)



09.01.2025

UK government tightens criteria for new Waste-to-Energy plants



18.12.2024

2024 a positive year for Waste-to-Energy, the Industry Barometer says

HEAT FROM WASTE-TO-ENERGY
A HOT TOPIC FOR A REASON

Waste-to-Energy (WtE) refers to the incineration of non-recyclable waste which is then turned into different energy sources, including heat. Heat from Waste-to-Energy is then redistributed to homes, offices, shopping malls, schools, hospitals, museums, and factories.

In Europe, WtE plants provide heat to approximately 17 million people each year. In some urban areas, WtE plants cover more than 50% of residential heat demand and in general, 10% of Europe's district heating energy comes from the WtE process.

Public Relations Committee

- The Public Relations Committee defines **the way ESWET communicates**.
- It covers a broad range of tasks, from **organising ESWET-branded events and workshops** to **producing dissemination materials** such as brochures, reports, and press releases to **ensure the visibility of the association**.
- The **Chair of the Public Relations Committee** is Ole Hedegaard Madsen (Babcock & Wilcox Renewables).
- The Public Relations Committee meets **every four months**, at the premises of a member or in Brussels.



ESWET Bodies



Public Relations Committee – Ongoing campaigns

The '[Integrated Resource Recovery Facility](#)' showcases a new model of Waste-to-Energy plants unlocking the full potential of the sector towards decarbonisation and circular economy.

The '[New Perspectives](#)' highlight the positive practical societal benefits of Waste-to-Energy through a variety of articles that follow a positive narrative.

The '[Beauty in the Beast](#)' puts a spotlight on the unexpected solutions offered by WtE to support Europe's ambition to reach climate targets, reduce pollution, and move towards a circular economy.

[Activity Reports](#) available online and in print. They offer insights into the association's structure, goals, and priorities. They also spotlight ESWET members and a range of communication activities.



Membership

Companies which are established in Europe and are involved in the design, development, production, operation, maintenance, refurbishment or repair and assembly of components designed for Waste-to-Energy technology can become ESWET members.



Membership

ESWET has 2 membership categories:

FULL MEMBERSHIP

- Companies supplying main components [Boilers, Flue Gas Cleaning (incl. Carbon Capture), Fluidised Beds, Grate Systems, Rotary Kilns] can only become Full Members
- Member of the General Assembly and the Executive Board with voting rights
- Member of the TC and PR Committees
- Member of the Working Groups
- Representatives are eligible to be President or Vice-President of ESWET
- The full membership is 20,592€ per year



Full Members today



Membership

ESWET has 2 membership categories:

ASSOCIATE MEMBERSHIP

- Admission as an Associate Member is open to all other companies
- Member of the General Assembly (not Executive Board) with voting rights
- Member of the Committees
- Member of the Working Groups
- Associate Membership is 8,840€ per year with a minimum 2-year commitment



Associate Members today



ESWET Secretariat



Secretary General

Patrick Clerens

p.clerens@eswet.eu

Head of Policy

Charoula Melliou

c.melliou@eswet.eu

Communications & Events Officer

Daniela Berretta

d.berretta@eswet.eu

Junior Policy Officer

Paola Macculi

p.macculi@eswet.eu

Junior Policy Officer

Luigi Ferrieri Caputi

l.ferrieri@eswet.eu





European Suppliers of Waste-to-Energy Technology

Avenue Adolphe Lacomblé 59
BE -1030 Brussels

Tel.: +32 2 743 29 88



www.eswet.eu



info@eswet.eu



@ESWET_EU