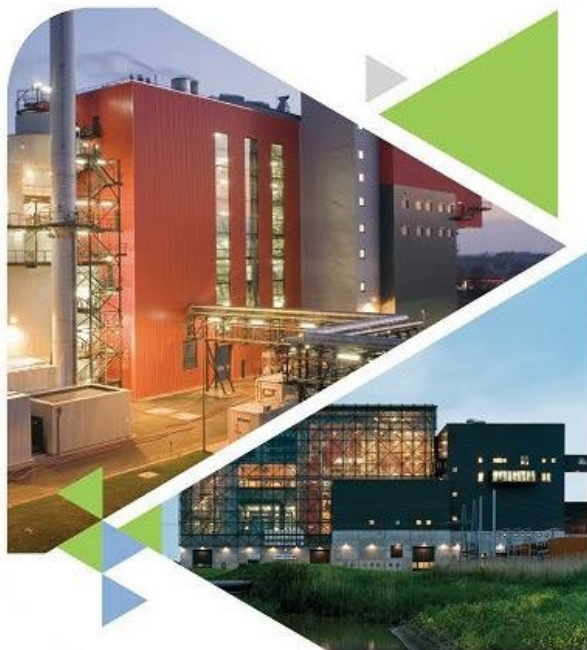




European Suppliers of Waste-to-Energy Technology



**ADVANCED TECHNOLOGIES FOR CLEAN ENERGY
AND SUSTAINABLE WASTE MANAGEMENT!**

About ESWET



- **ESWET** is the association representing the **European Suppliers of Waste-to-Energy Technology**.
- Our main task is to **foster the development** of Waste-to-Energy (WtE) technologies and to **represent the interests** of WtE technology suppliers at EU level.
- We seek to **raise awareness of the positive implications of Waste-to-Energy technology** for the environment and the climate.
- ESWET has **46 members** who are all suppliers of the main components of Waste-to-Energy plants and are actively building and maintaining Waste-to-Energy plants in Europe and throughout the world.



About ESWET



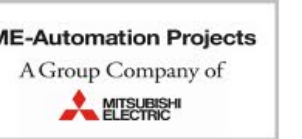
- **ESWET's membership** has experienced significant growth in recent years, **more than doubling** between 2018 and 2026.
- This expanding membership base has bolstered the association's **resources and personnel**, allowing for **greater influence and reach**, and enhancing ESWET's impact at the EU level.
- Since the introduction of the **EU Green Deal** (2019), the Waste-to-Energy (WtE) sector has been facing an increasing number of regulations. ESWET's role has become more crucial than ever, ensuring that the voice of the WtE industry is effectively represented in EU policymaking.

**18
MEMBERS
in 2018**

**46
MEMBERS
in 2026**



ESWET members



Activities



ESWET is in charge of **Public Affairs**, specifically dealing with the European Union, on behalf of its members.

ESWET:

- **Influences** the EU decision-making process
- **Provides expertise** to the members on the regulations concerning Waste-to-Energy technologies
- **Informs** the general public on the benefits of Waste-to-Energy
- **Connects** members, stakeholders and policymakers

...and much more!



ESWET Main Activities



ADVOCACY

ESWET works on the **latest European regulations** involving Waste-to-Energy and exchanges daily with the EU policymakers to **defend the interests** of the **Waste-to-Energy** suppliers.

RAISING AWARENESS

ESWET **organises events and publications** to promote Waste-to-Energy at the EU level. The association also constantly provides its members with the **latest news** on the WtE sector.

NETWORK

ESWET organises activities and meetings to offer a **room for networking** to all its members. With 46 members from all over Europe, ESWET gathers the **main players of the WtE sector**.

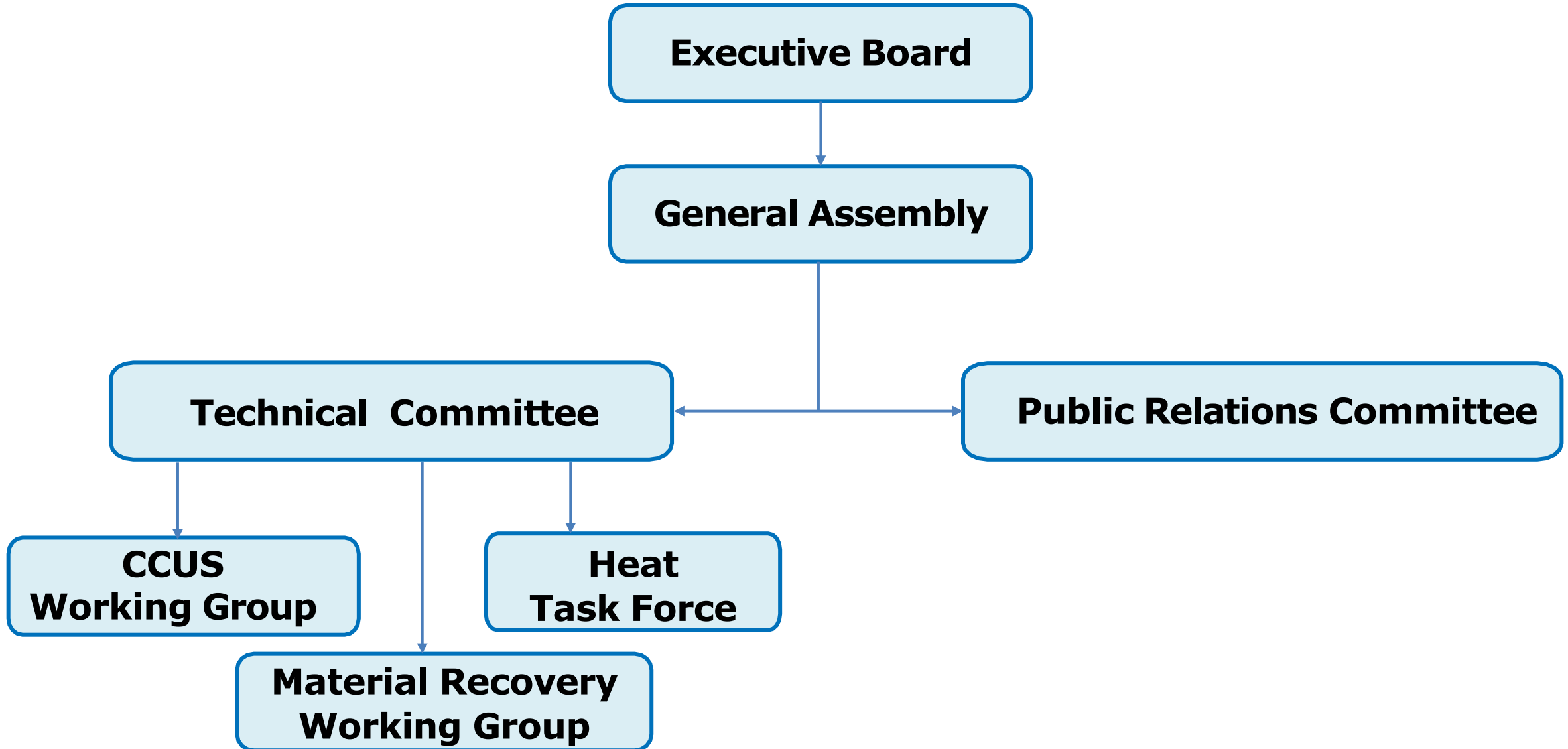
ESWET priorities in 2025



- Raising awareness about Waste-to-Energy in the **circular economy**.
- **Achieving** the most favourable outcome for Waste-to-Energy in the European and UK markets on carbon emissions (ETS) and carbon removals.
- Preserving our interests in the revision of the **Industrial Emissions Directive and the Waste Framework Directive**, two essential files for the WtE sector.
- Helping develop a functioning market for **secondary raw materials** based on recovered materials from WtE processes.
- Actively promoting the concept of the **Integrated Resource-Recovery Facility**, the step-change evolution of the WtE plant.



ESWET Structure



ESWET Structure



ESWET Vice-President

Ulrich Martin
MARTIN GmbH

ESWET President

Siegfried Scholz
Kanadevia Inova

ESWET Vice-President

Ivan Christiaens
Keppel Seghers

Chair of Technical Committee

Désiré BenDahan
PAPREC

Co-Chairs of Public Relations Cmt

Jasmin Martin
Steinmüller Engineering

Vanessa Demel
Martin GmbH

Chair of CCUS WG

Kai Lieball
Kanadevia Inova

Chair of Material Recovery WG

Johan Heiszwolf
Lhoist

Chair of Heat Task Force

Jens Kitzhofer
APEX Group

ESWET Secretary-General

Patrick Clerens

ESWET Bodies

Executive Board and General Assembly



Executive Board

- The **Executive Board** discusses and decides the main priorities for the association and makes recommendations for the decisions taken by the General Assembly.
- It is composed of the **full members that supply main components** (grates, fluidised beds, rotary kilns, boilers, flue gas cleaning systems, incl. carbon capture).
- **ESWET President**, Mr Siegfried Scholz (Kanadevia Inova), chairs the Executive Board.
- The Executive Board takes place every six months, on the day before the General Assembly. It is held at the premises of a member or in Brussels.



General Assembly

- The **General Assembly leads** the longstanding **policies** and **the general decision-making process** at ESWET.
- The General Assembly is in charge of **monitoring the functioning of the association**, including the budget.
- **ESWET President**, Mr Siegfried Scholz (Kanadevia Inova), chairs the General Assembly, where members appoint a person to represent them.
- The General Assembly meets **every six months**, at the premises of a member or in Brussels.



ESWET Bodies

Technical Committee



Joint Statement on the role of Waste-to-Energy in the EU Taxonomy



Friday, 19 March 2021
10:00 – 11:30 CET



WASTE INCINERATION BREF: ONE YEAR LATER

A conversation with



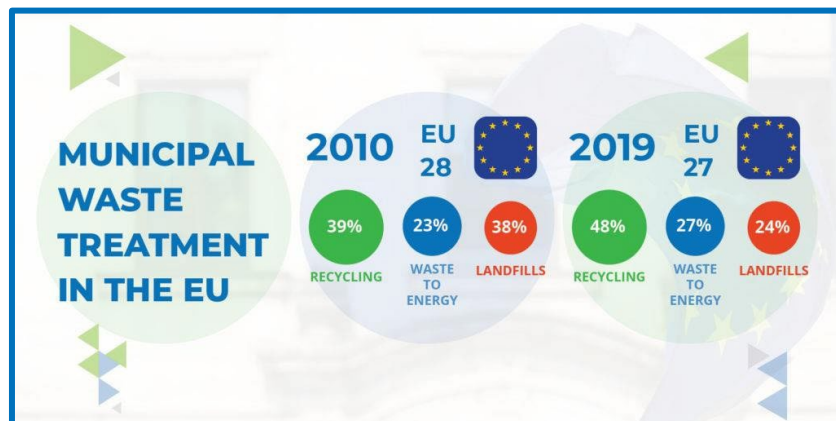
Anita Matic
Policy Officer
EUROPEAN COMMISSION



Bettina Kamuk
Global Market Director WtE
RAMBOLL



Lighea Speziale
External Advisor Environment
CEWEP



Elaboration of CONTRACTUAL GUIDELINES for WASTE-TO-ENERGY

Technical Committee

- The Technical Committee oversees the **policy, legal, and technical work** of ESWET.
- It **regularly informs** its members on EU developments, **implements the policy positions of ESWET** and **provides input to the work of the EU institutions** whenever required.
- The **Chair of the Technical Committee** is Désiré BenDahan (PAPREC).
- The Technical Committee meets **every four months**, at the premises of a member or in Brussels.



Carbon Capture, Utilisation and Storage (CCUS) Working Group

- The **CCUS ESWET WG** aims to assess the leading technical and regulatory challenges and opportunities to enlarge the ground for these applications and make the **Waste-to-Energy** sector a **driver for carbon capture in Europe**. The **Chair of the CCUS Working Group** is Kai Lieball (Kanadevia Inova), and the Co-Chairs are Alain Bill (Andritz) and Vincent Grosjean (Paprec).

Material Recovery Working Group

- The **Material Recovery WG** aims to analyse and respond to the legislative challenges affecting Incineration Bottom Ash and Fly Ash recovery from WtE processes and also shed light on their utilisation. The **Chair of the Working Group** is Johan Heiszwolf (Lhoist).

Heat Task Force

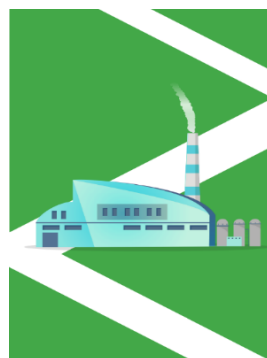
- The Task Force on Heat aims to map the feasibility, benefits, and challenges of heat applications for WtE, assessing at the same time the EU legal framework concerning aspects of heat production and recovery. The **Chair of the Task Force** is Jens Kitzhofer (APEX Group).

Public Relations Committee

- The Public Relations Committee defines **the way ESWET communicates**.
- It covers a broad range of tasks, from **organising ESWET-branded events and workshops** to **producing dissemination materials** such as brochures, reports, and press releases to **ensure the visibility of the association**.
- The **Chair of the Public Relations Committee** is Ole Hedegaard Madsen (Babcock & Wilcox Renewables).
- The Public Relations Committee meets **every four months**, at the premises of a member or in Brussels.



ESWET events and publications



10 April 2024, 14:30 – 15:30 CEST
Bergamo

REVOLUTIONISING WASTE MANAGEMENT Unleashing the Potential of Integrated Resource-Recovery Facilities



09.01.2025

UK government tightens criteria for new Waste-to-Energy plants



18.12.2024

2024 a positive year for Waste-to-Energy, the Industry Barometer says



ESWET Campaigns

Activity Reports available online and in print. They offer insights into the association's structure, goals, and priorities. They also spotlight ESWET members and a range of communication activities.

The '**Integrated Resource Recovery Facility**' showcases a new model of Waste-to-Energy plants unlocking the full potential of the sector towards decarbonisation and circular economy.

The '**New Perspectives**' highlight the positive practical societal benefits of Waste-to-Energy through a variety of articles that follow a positive narrative.

The '**Beauty in the Beast**' puts a spotlight on the unexpected solutions offered by WtE to support Europe's ambition to reach climate targets, reduce pollution, and move towards a circular economy.



Joint booths & event advantages for members



- **Joint booths at major trade fairs**, including IFAT Munich 2026, the world's leading environmental technologies expo.
- **Shared visibility under the ESWET umbrella**, with significantly reduced exhibition costs.
- **Direct exposure** to key industry players, public authorities, utilities, and international delegations.
- Opportunity to **test market presence** at major expos in a low-risk, cost-efficient way.
- Member **discounts** and preferential conditions at leading sector conferences and events across Europe.



Market Intelligence



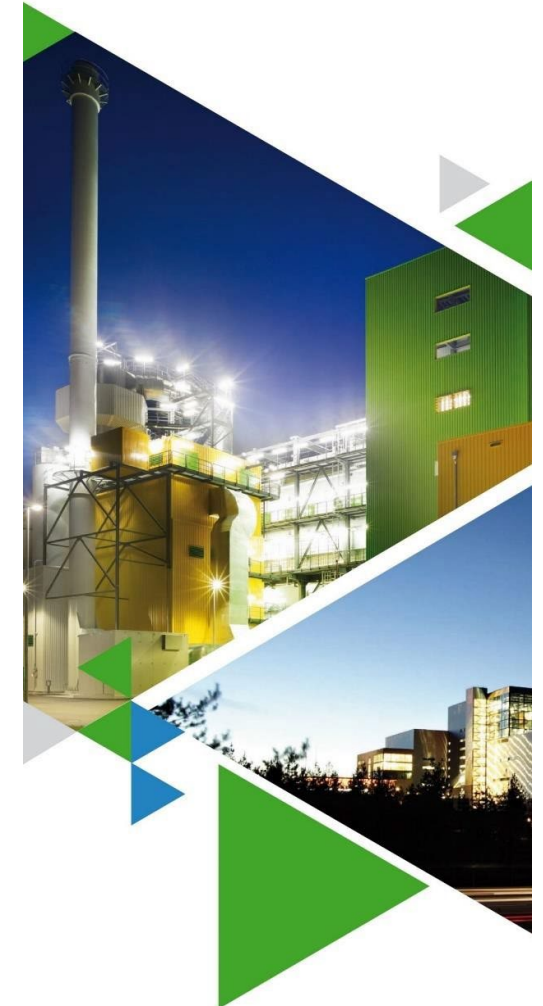
- **Continuous monitoring** of European and global WtE markets, including policy developments, investment trends, and emerging opportunities.
- **Targeted internal briefings** to support members' strategic positioning in early-stage or emerging markets.
- Under preparation for the first edition: **dedicated ESWET WtE market report** offering deeper insight into market trends, technology deployment, and national trajectories.
- Backed by [CLERENS](#)'s EU public-affairs expertise, providing enhanced policy intelligence, strategic advice, and insights into EU funding opportunities.



Membership



Companies which are established in Europe and are involved in the design, development, production, operation, maintenance, refurbishment or repair and assembly of components designed for Waste-to-Energy technology can become ESWET members.



Membership

ESWET has 4 membership categories:



1) Full Membership

- Companies supplying main components [Boilers, Flue Gas Cleaning (incl. Carbon Capture), Fluidised Beds, Grate Systems, Rotary Kilns, steam turbines] can **only** become Full Members
- Member of the GA and the EB with voting rights
- Member of all Committees and Working Groups
- Representatives are eligible to be President or Vice-President of ESWET
- The full membership is 22,000€/year.

Full Members today



Membership

ESWET has 4 membership categories:



2) Associate Membership

- Companies supplying non-main components and/or services for WtE
- Member of the General Assembly (not Executive Board) with voting rights
- Member of all Committees and Working Groups
- Associate Membership is 9,400€/ year with a minimum 2-year commitment (in 1 installment)

Associate Members today



Membership

ESWET has 4 membership categories:



3) Start-ups

- Innovative companies <5 years old
- Limited GA access (non-voting); No participation in EB
- Member of all Committees and Working Groups
- No benefit from joint booths
- 1 participant guaranteed in physical meetings
- Upgrade to Associate/Full Member after 2 years
- Membership fee is 4,700€/year with a minimum 2-year commitment (in 2 installments)

4) Research Institutes

- Academic and Research institutes
- No participation in GA or EB; no voting rights
- Member of all Committees and Working Groups
- No benefit from joint booths
- 1 participant guaranteed in physical meetings
- Membership fee is 2,350€ per year

ESWET Secretariat



Secretary-General:

Patrick Clerens p.clerens@eswet.eu

Deputy Secretary-General:

Charoula Melliou c.melliou@eswet.eu

Technical Officer:

Dimitris Zikopoulos d.zikopoulos@eswet.eu

Communications & Events Officer:

Daniela Berretta d.berretta@eswet.eu

Policy Officer:

Sabina Alessandria s.alessandria@eswet.eu

Junior Policy Officer:

Luigi Ferrieri Caputi l.ferrieri@eswet.eu

Policy Assistant:

Lucrezia Nicotra assistant@eswet.eu





European Suppliers of Waste-to-Energy Technology

Avenue Adolphe Lacomblé 59
BE -1030 Brussels

Tel.: +32 2 743 29 88



www.eswet.eu



info@eswet.eu



@ESWET_EU